

# Pipeline Monthly

## VP TECHNICAL REPORT

ANTHONY WIKUM, VP TECHNICAL

The San Diego board has been fortunate to have dedicated volunteers on the board through the years. We look forward to the upcoming years and expanding our education. I find the comradery of working towards a cause and concentrated effort is enjoyable.

We are looking for new faces at multiple board member levels. The benefits for an engineer on the board are immense including staying in touch with your fellow engineers and keeping your finger on the pulse of the local industry. If you are interested please reach out to one of the board members and we are happy to introduce you to the process.

Anthony Wikum

awikum@dawsonco.com  
Dawson Company - Business Development Group

<http://sections.asce.org/sandiego/home>

Anthony Wikum

## 2019-2021 Chapter Officers

President  
Grant Schaffer  
[husker92592@gmail.com](mailto:husker92592@gmail.com)

V.P. Technical  
Anthony Wikum  
[awikum@dawsonco.com](mailto:awikum@dawsonco.com)

V.P. Legislative  
Juan Contreras  
[jacontreras1964@yahoo.com](mailto:jacontreras1964@yahoo.com)

V.P. Membership  
Chrissy Hamm  
[chrissyk@specsales.com](mailto:chrissyk@specsales.com)

Treasurer  
Rod Koepke  
[rkoepke@syska.com](mailto:rkoepke@syska.com)

Administrative Secretary  
Liza Cusimano  
[lcusimano@treisd.com](mailto:lcusimano@treisd.com)

Corresponding Secretary  
Anthony Simpson  
[asimpson@delcosales.com](mailto:asimpson@delcosales.com)

ASPE SD Affiliate  
Martin Trim  
[Martin@barrettspump.com](mailto:Martin@barrettspump.com)

### Inside this issue

Technical Report.....	1
President Report .....	2
Membership Report .....	6
CPD Testing .....	4
ASPE SD GOLF .....	12
Covid 19.....	15
ASPE SD BALLOT.....	8

### Special points of interest

- CPD Testing
- Covid 19 Update
- National Convention

# BARRETT

## Engineered Pumps

Specialists in pumps & pumping systems

1695 National Avenue  
San Diego, CA 92113  
(619) 232-7867  
FAX (619) 232-3029  
[www.barrettump.com](http://www.barrettump.com)

Pumps

Parts

Service

Repair



STANCOR



### REPRESENTING

Variable Speed pumping systems. Multi stage pumps & circulating pumps, dosing pumps and systems.  
[www.grundfos.com](http://www.grundfos.com)

Centrifugal, vertical industrial and municipal turbine pumps, ANSI process pumps.  
[www.peerlesspump.com](http://www.peerlesspump.com)

Submersible sump and sewage pumps and pumping systems.  
[www.femyers.com](http://www.femyers.com)

Self-priming industrial centrifugal and rotary gear pumps.  
[www.gormanrupp.com](http://www.gormanrupp.com)

Municipal, industrial, close & flexible coupled centrifugal pumps.  
[www.grundfos.com](http://www.grundfos.com)

Municipal water and waste water pumps.  
[www.grundfos.com](http://www.grundfos.com)

Regenerative turbine type and centrifugal pumps.  
[www.cranepumps.com](http://www.cranepumps.com)

HVAC end suction, split case, vertical inline centrifugal pumps.  
[www.aurorapump.com](http://www.aurorapump.com)

Industrial, special metal pumps and domestic water systems.  
[www.gouldspumps.com](http://www.gouldspumps.com)

Severe duty recessed and heavy duty wastewater pumps.  
[www.grundfos.com](http://www.grundfos.com)

High pressure piston and plunger pumping units & pump sets.  
[www.catpumps.com](http://www.catpumps.com)

Magnetic driven seal-less chemical pumps.  
[www.marchpump.com](http://www.marchpump.com)

Hydra-cell multi-diaphragm, low pulse positive displacement pumps.  
[www.hydra-cell.com](http://www.hydra-cell.com)

Stainless steel and bronze centrifugal industrial, marine, and sanitary pumps.  
[www.ampcopumps.com](http://www.ampcopumps.com)

Contractor, commercial, industrial cast iron & stainless steel submersible effluent & solids handling pumps & oil management controls. [www.stancorpumps.com](http://www.stancorpumps.com)

Condensate and boiler feed pumping units.  
[www.rothpump.com](http://www.rothpump.com)

Small industrial diaphragm pumps.  
[www.xylemflowcontrol.com](http://www.xylemflowcontrol.com)

Pumps for ponds and fountains.  
[www.lg-outdoor.com](http://www.lg-outdoor.com)

Butterfly and check valves, flexible connectors, strainers, heat exchangers, and expansion tanks and air separators.  
[www.wheatleyhvac.com](http://www.wheatleyhvac.com)

Commercial, industrial, municipal pump and system control panels.  
[www.sjerhombus.com](http://www.sjerhombus.com)



# PRESIDENT'S REPORT

GRANT SCHAFFER ASPE SD PRESIDENT , REG. 4 NOMINATING COMMITTEE

To all Members ASPE San Diego, Welcome all to November 2020, and it is special as we are now in voting season so, Get out and vote! In San Diego! We are back for another month of virtual meetings. Last month, October was great thanks to Anthony Wikum for another great topic. If any member has any specific topics you want to see please let us know. We are continuing forward with online meetings and this month should be another good one. Stay tuned in as we may be in person for December. Hopefully soon we will be back in person. So, to keep everyone safe we are not meeting in person this month. Nationally here is the following list of new

- Carol Johnson, CPD, LEED AP, CFI, FASPE
- Vice President, Technical: Vincent (Vinny) Falkowski, PE, PMP, CCM
- Vice President, Education: Jim Zebrowski, PE, CPD, FASPE
- Vice President, Legislative: Brianne N. Hall, PE, CPD, LEED AP BD+C, GGP
- Vice President, Membership: Jason S.A. McDonald, CPD
- Vice President, Affiliate: Thomas P. Sharp
- Treasurer: Blair Minyard, PE, CDT, CPD

Board members:

**REPRESENTING:**



Engineered Pumps, Hydronic, and Water Treatment Equipment



	<ul style="list-style-type: none"> <li>◆ Submersible, vertical, and dry pit sewage and sump pumps</li> <li>◆ Condensate return, boiler feed, and circulating pumps</li> <li>◆ Submersible and vertical grinder pumps, "Slicer" pumps, "Mover" pumps, "Scum Blaster" systems, prefabricated lift stations</li> </ul>			
	<ul style="list-style-type: none"> <li>◆ Submersible and dry pit non-clog sewage, effluent and wastewater pumps</li> <li>◆ Grinder pumps, circulator pumps, jacketed pumps, and portable dewatering pumps</li> <li>◆ High temperature and corrosion resistant pumps</li> <li>◆ 10 GPM to over 10,000 GPM, 1/2 HP to over 500 HP Prefabricated lift stations</li> </ul>			
	<ul style="list-style-type: none"> <li>◆ UL- and ETL-listed packaged variable and constant speed pumping systems</li> <li>◆ Domestic water, HVAC, irrigation, and fire pump packages</li> <li>◆ Custom engineering and design capabilities</li> <li>◆ Each system full factory-tested and warranted</li> </ul>			
	<ul style="list-style-type: none"> <li>◆ High performance self-priming and end suction centrifugal pumps</li> <li>◆ Standard heavy-wall ductile iron volutes and 17-4 PH stainless steel shafts</li> <li>◆ Shimless impeller adjustment and cartridge-type SC/TC mechanical seals</li> </ul>			
	<ul style="list-style-type: none"> <li>◆ Non-chemical water treatment using ozone technologies</li> <li>◆ For cooling towers, lakes, fountains, aquariums, swimming pools and other open systems</li> <li>◆ AquaPak™ EWS emergency water supply packages for critical facilities</li> <li>◆ CleanStream™ cooling tower filtration packages</li> </ul>			
	<ul style="list-style-type: none"> <li>◆ Patented electroabsorptive technology for water purification and filtration</li> <li>◆ Submicron particulate, pathogen, trace pharmaceutical, &amp; cellular debris removal</li> <li>◆ Much lower pressure drop, higher flow rates than comparable UF membranes</li> <li>◆ Seromix Advanced Metals Removal System</li> </ul>			
	<ul style="list-style-type: none"> <li>◆ Packaged fire pump systems</li> <li>◆ Inline, end suction and double suction circulating pumps</li> <li>◆ Turbine, axial, and mixed flow pumps</li> <li>◆ Vertical and horizontal multi-stage pumps</li> </ul>			
	<ul style="list-style-type: none"> <li>◆ PURAIN Self-Cleaning Pre-Filters for Rainwater Collection Systems</li> <li>◆ AQUALOOP Graywater Treatment                             <ul style="list-style-type: none"> <li>◆ 6 Log Reduction of Bacteria (99.9999%) and 99.7% Virus Removal</li> <li>◆ NSF 350 Certification</li> </ul> </li> <li>◆ DRAINMAX Tunnel Infiltration Products for On-Site Detention</li> </ul>			
	<ul style="list-style-type: none"> <li>◆ Pneumatic Ejectors</li> <li>◆ Diaphragm Pumps</li> <li>◆ Plunger Pumps</li> </ul>			
	<ul style="list-style-type: none"> <li>◆ Stainless steel vertical and horizontal multi-stage pumps</li> <li>◆ Flows to 550 GPM, Heads to 1350 Ft., Temp to 285° F, Working Pressures to 600 PSI</li> <li>◆ Cast AISI 304 or 316 stainless steel S/D casing</li> <li>◆ NSF/ANSI 61 Annex G certified</li> </ul>			
	<table style="width: 100%; border: none;"> <tbody> <tr> <td style="vertical-align: top;"> <ul style="list-style-type: none"> <li>◆ HVAC specialties</li> <li>◆ Triple duty valves</li> <li>◆ Suction diffusers</li> <li>◆ Expansion tanks</li> </ul> </td> <td style="vertical-align: top;"> <ul style="list-style-type: none"> <li>◆ Air separators</li> <li>◆ Flex connectors</li> <li>◆ Strainers</li> <li>◆ Hydropneumatic tanks</li> </ul> </td> <td style="vertical-align: top;"> <ul style="list-style-type: none"> <li>◆ Butterfly valves</li> <li>◆ Heat exchangers</li> <li>◆ Flow metering devices</li> <li>◆ ASME pressure vessels</li> </ul> </td> </tr> </tbody> </table>	<ul style="list-style-type: none"> <li>◆ HVAC specialties</li> <li>◆ Triple duty valves</li> <li>◆ Suction diffusers</li> <li>◆ Expansion tanks</li> </ul>	<ul style="list-style-type: none"> <li>◆ Air separators</li> <li>◆ Flex connectors</li> <li>◆ Strainers</li> <li>◆ Hydropneumatic tanks</li> </ul>	<ul style="list-style-type: none"> <li>◆ Butterfly valves</li> <li>◆ Heat exchangers</li> <li>◆ Flow metering devices</li> <li>◆ ASME pressure vessels</li> </ul>
<ul style="list-style-type: none"> <li>◆ HVAC specialties</li> <li>◆ Triple duty valves</li> <li>◆ Suction diffusers</li> <li>◆ Expansion tanks</li> </ul>	<ul style="list-style-type: none"> <li>◆ Air separators</li> <li>◆ Flex connectors</li> <li>◆ Strainers</li> <li>◆ Hydropneumatic tanks</li> </ul>	<ul style="list-style-type: none"> <li>◆ Butterfly valves</li> <li>◆ Heat exchangers</li> <li>◆ Flow metering devices</li> <li>◆ ASME pressure vessels</li> </ul>		
<b>ACCESSORY LINES:</b>	<ul style="list-style-type: none"> <li>◆ Control panels, alarms</li> <li>◆ Fiberglass sump basins</li> <li>◆ Level sensors</li> <li>◆ Custom fabricated steel covers and frames</li> <li>◆ Elevator sumps, holding tanks, and alarms</li> </ul>			

SERVING THE BUILDING TRADES SINCE 1962

<p>115 E. Palmer Avenue, Unit C Glendale, CA 91205-3186 <a href="http://www.weilaquatronics.com">www.weilaquatronics.com</a></p>	<p>Tel: 818.244.5582 Fax: 818.247.0083 <a href="mailto:info@weilaquatronics.com">info@weilaquatronics.com</a></p>	<p>CALL TOLL FREE: <b>800.74PUMPS</b> (800.747.8677)</p>
--	---	--



# Women of ASPE



## GIVEAWAY

### *Hello Women of ASPE San Diego*

I hope you are keeping well and safe. Let's give a shout out to the Women of ASPE Chapter Liaisons in Region 4 South:-

**Vivian Enriquez -Los Angeles Chapter**

**Liza Cusimano-San Diego Chapter**

**Esperanza Arab-San Francisco Chapter**

**Claire Cowan – Phoenix Chapter**

**Anne Yardley Caldwell- Orange County Chapter**

Women of ASPE is having a Giveaway in Region 4 South in California, Phoenix and Nevada. Although are not currently having in-person meetings; we can still reach out as a community.

We are giving away a UV Sanitizing Wand from Sharper Image valued at \$79.00. We think the quality is good and would make a great gift. Win it and keep it or win and give it away. We will ship it for you.

The UV Sanitizing Wand is featured on YouTube video here

- <https://www.sharperimage.com/view/product/Travel+UV+Sanitizing+Wand/205847>

We are all currently a bit nervous to interact with others. This is a great item to win and send on to someone who you care about or keep for yourself and scan incoming packages.

We will ship the sanitizing wand anywhere in the continental United States, *excluding Alaska*, so whoever wins can send it to a family member, colleague, or friend, or keep for themselves. We are celebrating community. Women of ASPE is inclusive, men are eligible to win if they are WOA members, and membership is open to men. We currently have 20+men who are WOA Members. Winner drawing is October 30th. Winner will be announced October 31st. Women of ASPE is inclusive, men are also eligible to win if they are WOA members.

The Giveaway Entry form is here-

<https://m.shortstack.page/ZpqLv8>

***Enter to win today and good luck!***

**LINDA DEUNAY**

**Region 4 Liaison, Women of ASPE**



“Individual Chapters are not authorized to speak for the Society”

<https://www.aspesd.org/>

  
**DELCO SALES**  
 Southern California

	<p><b>A.O. Smith</b> Commercial &amp; residential water heaters both gas &amp; electric. <a href="http://www.hotwater.com">www.hotwater.com</a></p>		<p><b>METCRAFT</b> Stainless steel products for correctionals, hospitals, and schools. <a href="http://www.metcraftindustries.com">www.metcraftindustries.com</a></p>
	<p><b>Mission Rubber Company</b> Custom couplings for a wide range of above and underground pipe. <a href="https://missionrubber.com/">https://missionrubber.com/</a></p>	<p><b>B-Line</b> by <b>E.T.N.</b></p>	<p><b>Multi Fittings</b> The widest range of injection molded fittings for waste, vent, and drains. <a href="https://multifittings.com/">https://multifittings.com/</a></p>
	<p><b>Oatey</b> Washing machine &amp; ice maker boxes, Dearborn tubular, ADA trap covers. <a href="http://www.oatey.com">www.oatey.com</a></p>	<p><b>CTS Flange</b> "Fully floating" copper companion flanges with electrolysis insulation. <a href="http://www.ctsflange.com">www.ctsflange.com</a></p>	<p><b>Pfister</b> Kitchen, Specialty, and bathroom faucets. Shower heads &amp; hand held showers. <a href="http://www.pfisterfaucets.com">www.pfisterfaucets.com</a></p>
	<p><b>Sloan Valve</b> Providing smart, clean, sustainable restroom solutions and designs. <a href="http://www.sloan.com">www.sloan.com</a></p>	<p><b>Fox Environmental</b> Fox washdown units. Designed to divert all your wash down water to waste. <a href="http://www.foxenviro.com.au/us/">http://www.foxenviro.com.au/us/</a></p>	<p><b>State Water Heaters</b> Commercial &amp; Residential water heaters both gas &amp; electric. <a href="http://www.staterwaterheaters.com">www.staterwaterheaters.com</a></p>
	<p><b>T&amp;S Brass</b> Faucets, fittings, &amp; specialty products for a wide range of markets. <a href="http://www.tsbrass.com">www.tsbrass.com</a></p>	<p><b>Liberty Pumps</b> Slump, drain, effluent, sewage, and grinder pumps and pump systems. <a href="http://www.libertypumps.com">www.libertypumps.com</a></p>	<p><b>Takagi</b> Tankless Commercial &amp; Residential water heaters. <a href="http://www.takagi.com">www.takagi.com</a></p>
	<p><b>TurboTorch</b> Soldering and welding torches, tips, kits and accessories. <a href="http://www.turbotorch.com">www.turbotorch.com</a></p>		<p><b>Watts (family of brands)</b> Ames - Blucher - Brae - Dormont - Orion - Powers - Watts Drainage - Watts Pure Water - Watts Regulator. <a href="http://www.watts.com">www.watts.com</a></p>

5375 East Hunter Avenue Anaheim, CA 92807  
Phone (714) 888-2444 • Fax (714) 888-2448 • [Sales@delcosales.com](mailto:Sales@delcosales.com) • [www.delcosales.com](http://www.delcosales.com)



"Individual Chapters are not authorized to speak for the Society"  
<https://www.asped.org/>

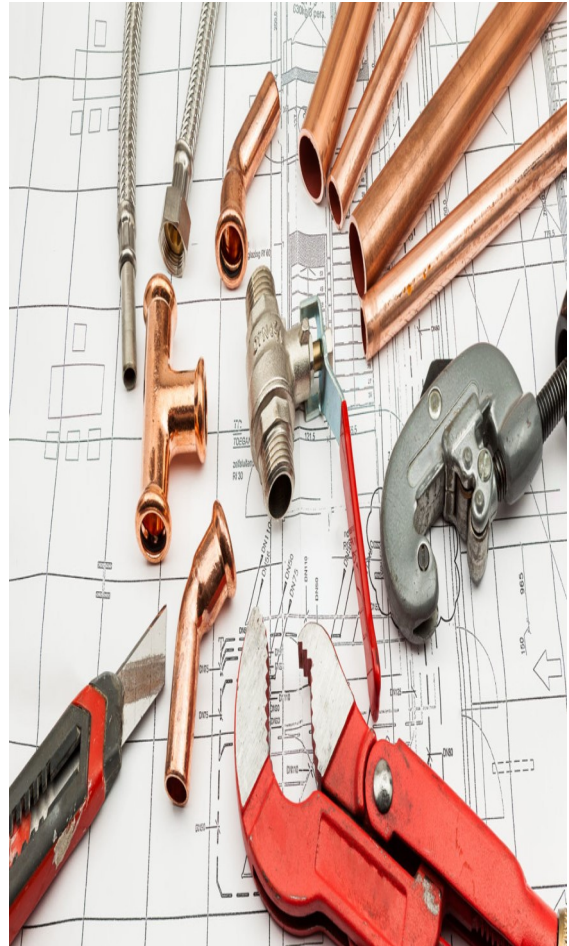
## V.P. Membership Report

Chrissy Hamm, VP Membership

Good news San Diego ASPE chapter we up one member from last month which puts us at 90. This time last year we were at 102 members. Let's keep getting the ASPE membership word out there. I know I have mentioned this in past emails but keep in mind the value & benefits of the membership.

- \* NEW! Plumbing Engineering & Design Handbook of Tables App<<https://aspe.org/tablesapp>>
- \* ASPE Plumbing Engineering Design Handbook
- \* Monthly subscription to Plumbing Engineer magazine
- \* ASPE Report<<https://aspe.org/aspereport>> (in Plumbing Engineer magazine)
- \* Biweekly ASPE Pipeline<<https://aspe.org/Pipeline>> e-newsletter
- \* Members-only ASPEnet access (includes access to ASPE PEDH chapters)
- \* Publication and education program discounts
- \* ASPE Biennial Convention and Exposition (even years)
- \* ASPE Biennial Technical Symposium<<https://aspe.org/2015-ts-home-page>> (odd years)
- \* Technical seminars and workshops
- \* Access to earn continuing education units<<https://aspe.org/CEUValidationCenter>> (CEUs)
- \* Technical books and manuals<<https://aspe.org/product-detail>> (specific to the profession of plumbing engineering)
- \* Professional certification / recertification
- \* Continuing education opportunities in Plumbing Engineer magazine
- \* Alfred Steele Scholarship Program<<https://aspe.org/SteeleScholarship>>
- \* Local chapter<<https://aspe.org/Regions>> affiliation

# TAKE CONTROL.



\*Monthly chapter meetings and technical seminar opportunities

\* Networking opportunities with plumbing engineers worldwide\*Leadership opportunities (national and chapter boards of directors and committees)

If you find any of the above benefits of value to you & you are not a member, please consider becoming one. Contact me if you need help doing so.

Chrissy Hamm  
Specification Sales  
760-427-6895



“Individual Chapters are not authorized to speak for the Society”  
<https://www.aspsd.org/>

## President .....Continued from page 3

### ASPE SD UPDATE

Due to San Diego City and County Lock down, mass gatherings for San Diegoans is still in the holding stage. Please take note to local updates for Covid 19. As we wait out this dilemma stay tuned to the ASPE SD website and the newsletter for future even holdings for the ASPE SD chapter. Currently Anthony Wikum is managing all monthly event and webinars are common place. We will let everyone know soon when we can all get back together. Thanks for the patience and stay safe.

Region 1 Director: Donald Keith, CPD, FASPE

Region 2 Director: Steve J. Kormanik, CPD, GPD

Region 3 Director: Curtis A. Ray Jr., CPD, FASPE

Region 4 Director: Duane D. Lease, PE

Region 5 Director: Bryan Hutton, CPD

Future dates to save Technical Symposium: September 21-26, 2021 in San Diego, CA. Also, the Women of ASPE are having a giveaway so Ladies check out your local liaison and get involved. The Giveaway Entry form is here <https://m.shortstack.page/ZpqLv8>

I hope every one is safe and its time to get back in the saddle for ASPE SD,

Warm regards, Grant Schaffer

ASPE San Diego President Warm regards,

Grant Schaffer

ASPE San Diego President, Region IV Nominating Committee

# TAKE CONTROL.



See Water, Inc. designs and manufactures innovative electrical pump controls, high liquid alarms and pump control panels for the commercial and industrial plumbing industries.

As a UL 508A and 698A control panel manufacturer, our expert team of professionals will find a solution that fits your application.



## SEEWATER

888-733-9283

[www.seewaterinc.com](http://www.seewaterinc.com)

### San Diego ASPE Newsletter Sponsorship Rates:

Size	Member	Non-Member
Bus. Card	\$90.00	\$120.00
1/4 Page	\$135.00	\$160.00
1/2 Page	\$200.00	\$230.00
Full Page	\$360.00	\$480.00
Flyer	\$115.00	\$135.00

### Contact:

Treasurer for payment  
Email: [rkoepke@syska.com](mailto:rkoepke@syska.com)

Checks shall be made payable to ASPE San Diego and sent to Rod Koepke at Syska Hennessy. Sponsorship art shall be sent to the newsletter editor. Please remember to send you add in a picture format such as .jpeg or .tiff files as an example.

## CHOOSE YOUR PERFECT FIT

### Thermostatic Balancing Valves for Domestic Hot Water Recirculation Systems



Automatically and continuously maintain the right temperature at your fixtures.

**SPEC**  
SPECIFICATION SALES  
SALES

Visit [www.CircuitSolver.com/perfect-fit](http://www.CircuitSolver.com/perfect-fit) or call your local rep at 909-594-7088



1295 East Acacia Street  
Ontario, CA 91761  
909-594-7088

[www.specsales.com](http://www.specsales.com)  
[orders@specsales.com](mailto:orders@specsales.com)

**Our Representation in Southern California includes the following manufacturers:**



[www.advancetapco.com](http://www.advancetapco.com)



[www.aquamotionhvac.com](http://www.aquamotionhvac.com)



[www.bosch-climate.us](http://www.bosch-climate.us)



[www.nvent.com](http://www.nvent.com)



[www.circuitsolver.com](http://www.circuitsolver.com)



[www.trenchdrain.net](http://www.trenchdrain.net)



[www.ez-flo.net](http://www.ez-flo.net)



[www.dorot.com](http://www.dorot.com)



[www.flexhose.com](http://www.flexhose.com)



[www.hawsc.com](http://www.hawsc.com)



[www.homesteadvalve.com](http://www.homesteadvalve.com)



[www.laco.com](http://www.laco.com)



[www.legendhvac.com](http://www.legendhvac.com)



[www.seachrome.com](http://www.seachrome.com)



[www.nventthermal.com](http://www.nventthermal.com)



[www.nupiamericas.com](http://www.nupiamericas.com)



[www.quantumflo.com](http://www.quantumflo.com)



[www.reopenetrationhousings.com](http://www.reopenetrationhousings.com)



[www.watercontrolinc.com](http://www.watercontrolinc.com)



[www.willoughby-ind.com](http://www.willoughby-ind.com)



“Individual Chapters are not authorized to speak for the Society”  
<https://www.asped.org/>



## San Diego Office:

10680 Treena Street  
San Diego, CA 92131  
858-368-8360 Office

866-517-3293 Fax

Focusing on Healthcare, Education, Commercial,  
Private, industrial and Process sectors



Anne Yardley Caldwell  
ayardley@elmcostewart.com



9040 Carroll Way, Suite 1, San Diego, CA 92121 (800) 800-8778 p (858) 437-0117  
f [www.elmcostewart.com](http://www.elmcostewart.com)

Approved for more applications  
than any other press system

For residential, commercial and industrial projects, Viega provides more press fitting system solutions for engineers than any other manufacturer. The Viega MegaPress® system for black iron is the only press fitting solution for both hydronic and gas applications. Viega MegaPressG approvals/listings for natural gas include UPC, CSA, ICC, TSSA and LA City Lab. Viega MegaPress approvals/listings for hydronic, fire protection and compressed air systems include UMC, UL, FM, ICC and TSSA. Viega also offers the first press fitting for PEX. Approved in the City of LA, Viega PEX Press fittings provide secure connections and a guaranteed method to identify unpressed connections, the Viega Smart Connect® feature.

Contact your local Viega representative to learn more:

David Carneal - david.carneal@viega.us



1-800-976-9819 | [www.viega.us](http://www.viega.us)

New Representative:  
Mainline Sales

One Mission.  
One Focus.  
No Distractions.

Emergency equipment isn't just what we do. It's all we do. Your safety is too important to entrust to just anyone. All Guardian emergency eyewash and shower products are inspected, fully assembled, and 100% water-tested in our Chicago facility, which means you receive the most reliable emergency equipment each time, every time. Your safety isn't just a priority. It's our only priority. Visit [gesafety.com](http://gesafety.com) to learn more.



Represented by:  
Mainline Sales  
(877) 300-9246



Advancing the Profession of Plumbing Engineering

ASPE is the international organization for professionals skilled in the design, specification, inspection and manufacture of plumbing systems.

## Covid 19 Update

# UPDATE ON ASPE OPERATIONS DUE TO THE CORONAVIRUS (COVID-19) PANDEMIC

<https://www.aspe.org/blog/update-on-aspe-operations-due-to-the-coronavirus-covid-19-pandemic/>

“Considering the continuing novel coronavirus (COVID-19) pandemic, and the current environment in which we live and work, ASPE is taking additional steps in protecting the health, welfare, and safety of our members, partners, and staff. During this time of working remotely and “social distancing,” the best way to communicate with staff is via email. You can find everyone’s email addresses here: [aspe.org/about/staff](https://www.aspe.org/about/staff). ASPE staff has developed a proactive guidance webpage with resources to help address many of the needs and concerns of our members: [aspe.org/coronavirus-covid-19-preparedness-resources](https://www.aspe.org/coronavirus-covid-19-preparedness-resources).

Billy Smith, FASPE, ASPE Executive Director/CEO”

ASPE San Diego Chapter

---

Primary Business Address

Your Address Line 2

Your Address Line 3

Your Address Line 4

Phone: 555-555-5555

Fax: 555-555-5555

E-mail: [someone@example.com](mailto:someone@example.com)

